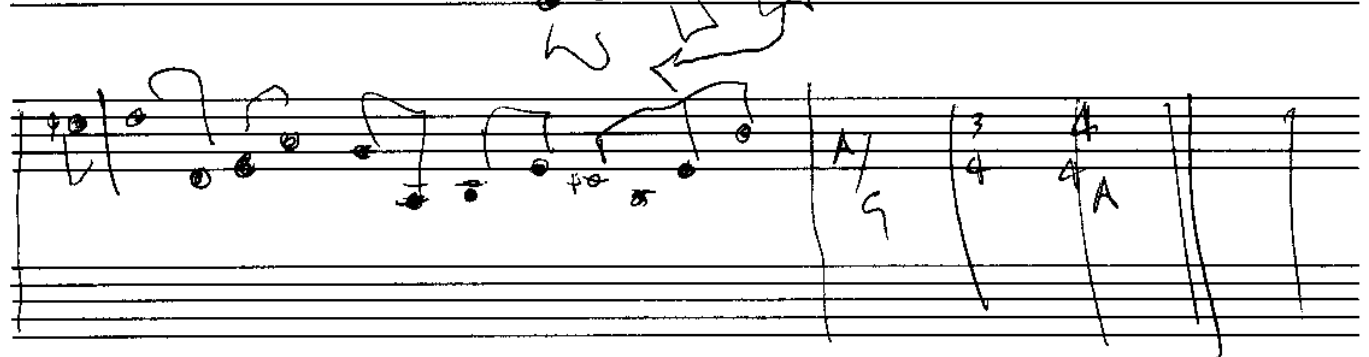
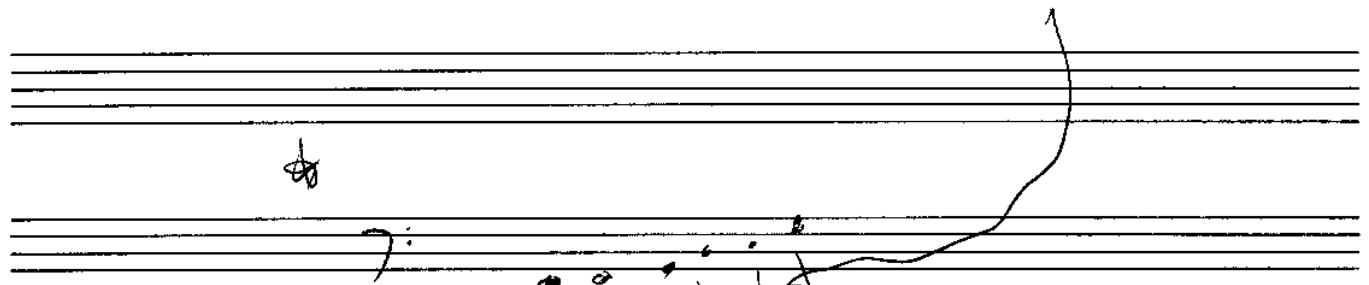
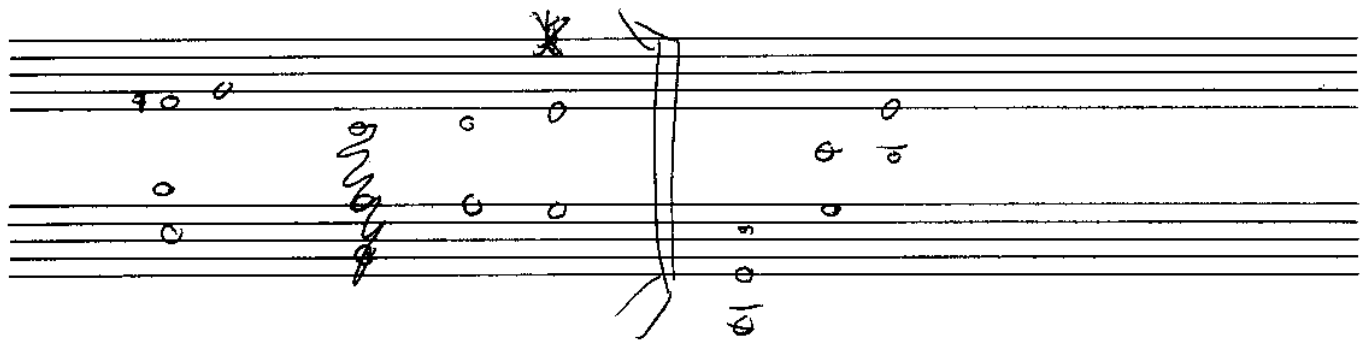
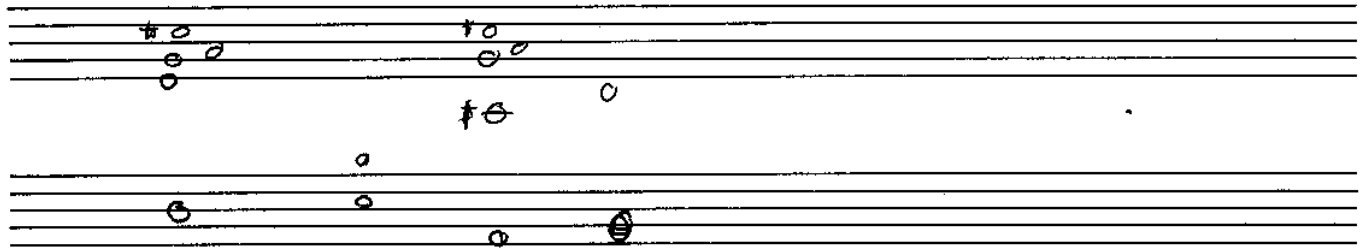
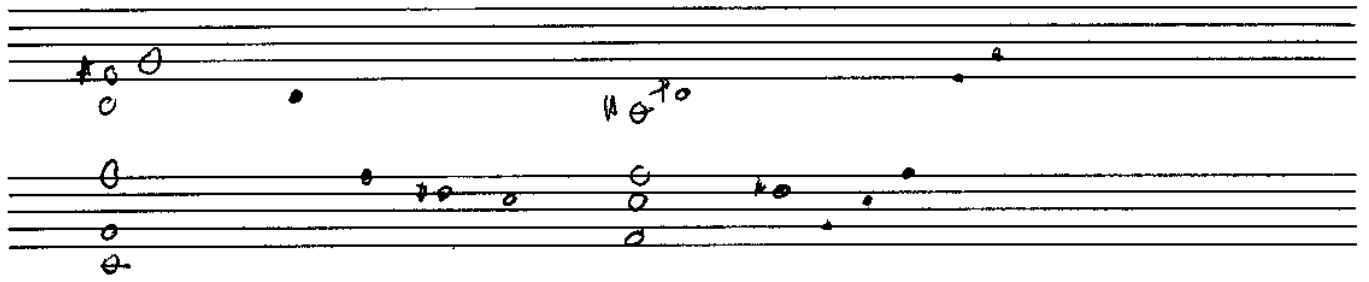


2-5-1



F (B<sup>b</sup> sus)

SSS remix intro/outro

Handwritten musical notation for the first system of a piece titled "SSS remix intro/outro". The notation is written on four staves. The first staff begins with a treble clef and a key signature of one flat (B-flat). The first measure is marked with a forte "f" dynamic and contains a chord of B-flat major with a suspended fourth (B-flat, D, F, A-flat). The notation includes various note values, rests, and accidentals. The second staff continues the melody and harmony. The third staff features a measure with a circled "B-flat" and "sus" annotation. The fourth staff concludes the first system with a double bar line and repeat signs. Below the first system are five additional empty staves.

A<sup>b</sup>Δ7

SSS

A<sup>b</sup>Δ7 remix

Handwritten musical notation for the first system, featuring a treble and bass staff with eighth and sixteenth notes, and a double bar line with a slash.

9-7 (EΔ7)

Handwritten musical notation for the second system, featuring a treble and bass staff with eighth and sixteenth notes, and a double bar line with a slash.

A<sup>b</sup>Δ7

A<sup>b</sup>Δ7

Handwritten musical notation for the third system, featuring a treble and bass staff with a double bar line and a slash.

A<sup>b</sup>9 no3

A<sup>b</sup>6

Handwritten musical notation for the fourth system, featuring a treble and bass staff with eighth and sixteenth notes, and a double bar line with a slash.

D<sup>b</sup>SUS

A<sup>b</sup>Δ7

Handwritten musical notation for the fifth system, featuring a treble and bass staff with eighth and sixteenth notes, and a double bar line with a slash.

Handwritten musical notation for the sixth system, featuring a treble and bass staff with a double bar line and a slash.

555

60 guitar & bass

[illegible]

Handwritten musical notation for the song "The Rose Tree". The notation is written on two staves. The first staff begins with a treble clef and a key signature of one flat (B-flat). It contains several measures of music, including a large, dark scribble that obscures some of the notation. The second staff continues the melody and includes a double bar line. The handwriting is somewhat informal, with some notes and rests clearly visible.

SOLOS

OPEN

E-

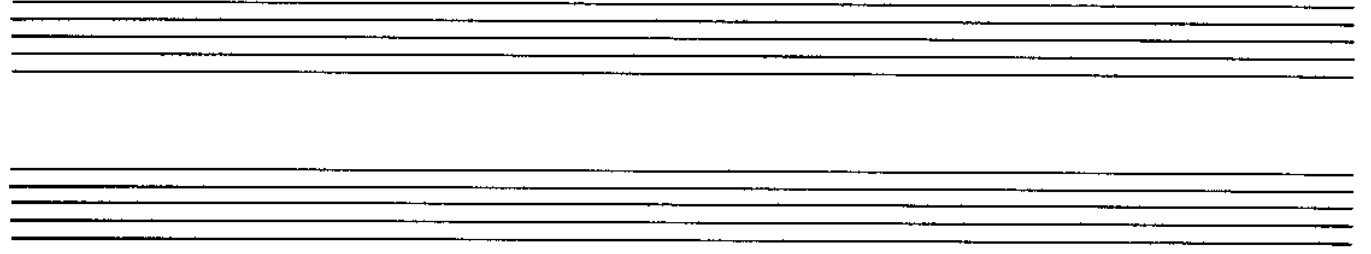
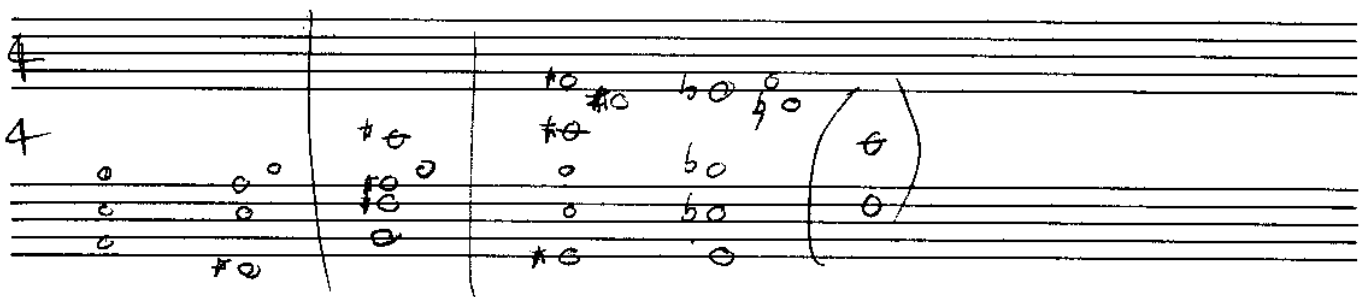
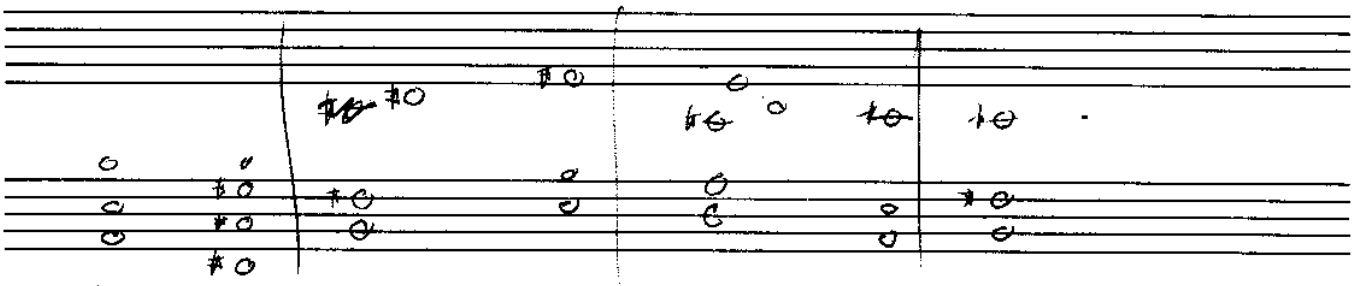
E-

F<sup>#</sup> add 9

AΔ7



# ESCAPE





fishy





Handwritten musical notation on four staves. The notation includes notes, rests, and various accidentals (sharps, flats, naturals). Above the notes are handwritten labels: B-, D-, G-, B<sup>b</sup>-, E<sup>b</sup>-, A-, D-, G-, F<sup>#</sup>-, B<sup>b</sup>-, E<sup>b</sup>-, F<sup>#</sup>-, B-, F-, B<sup>b</sup>-, E<sup>b</sup>-, C<sup>#</sup>-, F<sup>#</sup>-, B-, F-, B<sup>b</sup>-, E<sup>b</sup>-, D/C, and #0.

GIANT STRAPS

(A)

# Giant Surf

E7

A7

1

B7

2

D

A

B

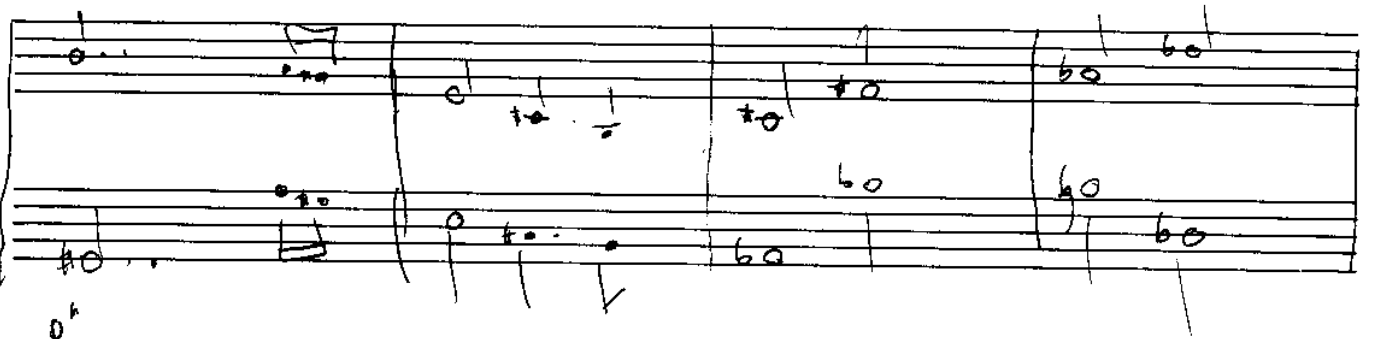
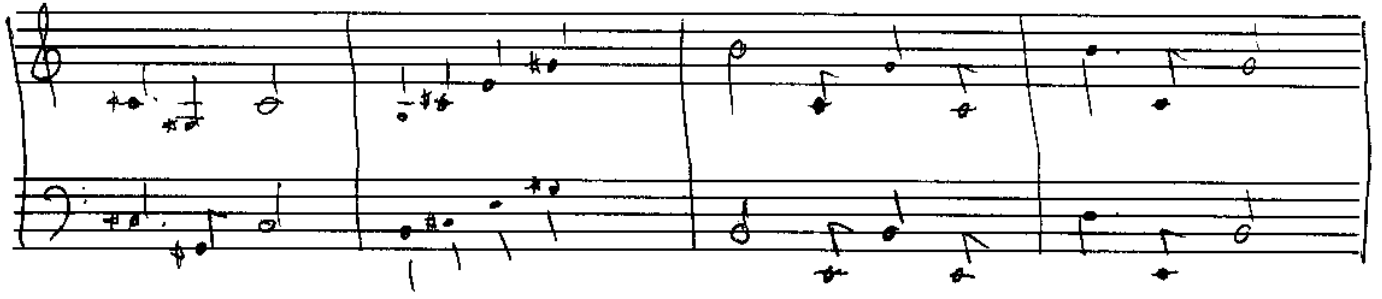
G

A

SOLO

A C | F A<sup>b</sup> | D7 | G - C7 | F A D E | A | B

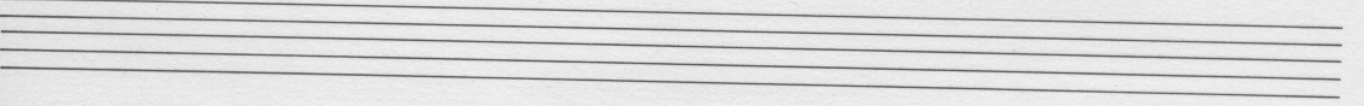
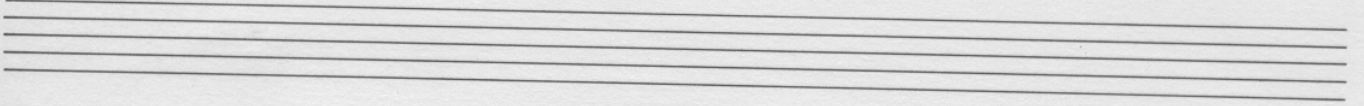
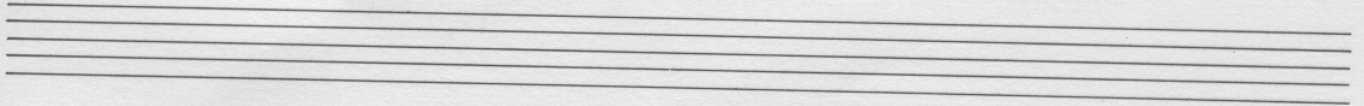
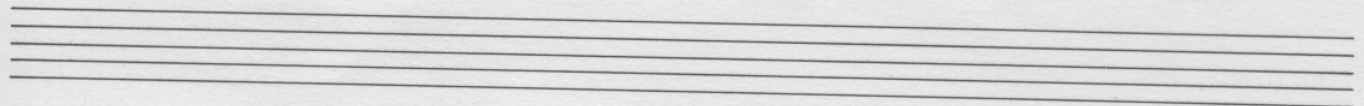
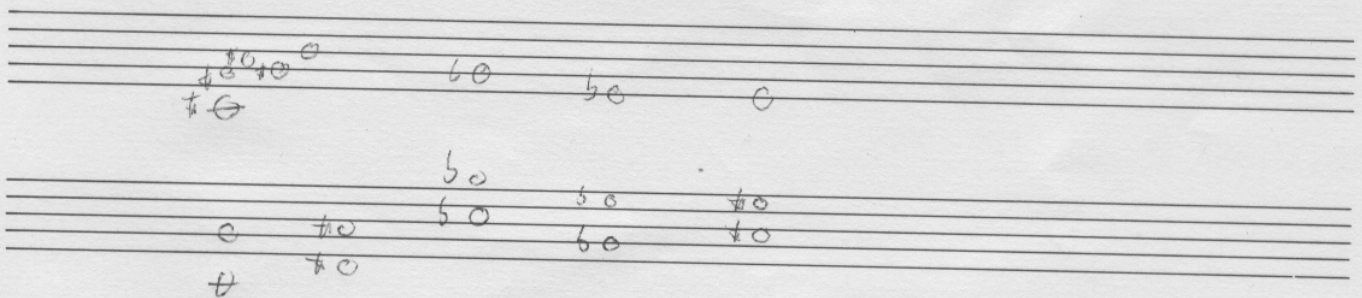
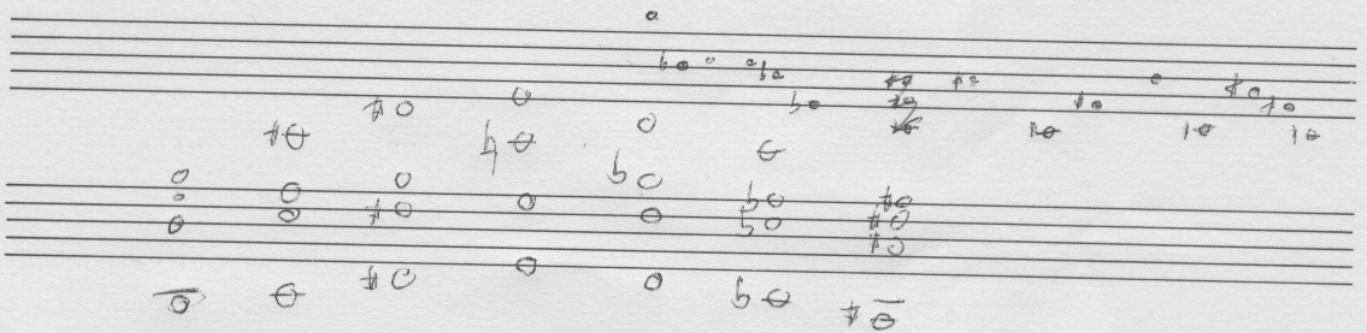
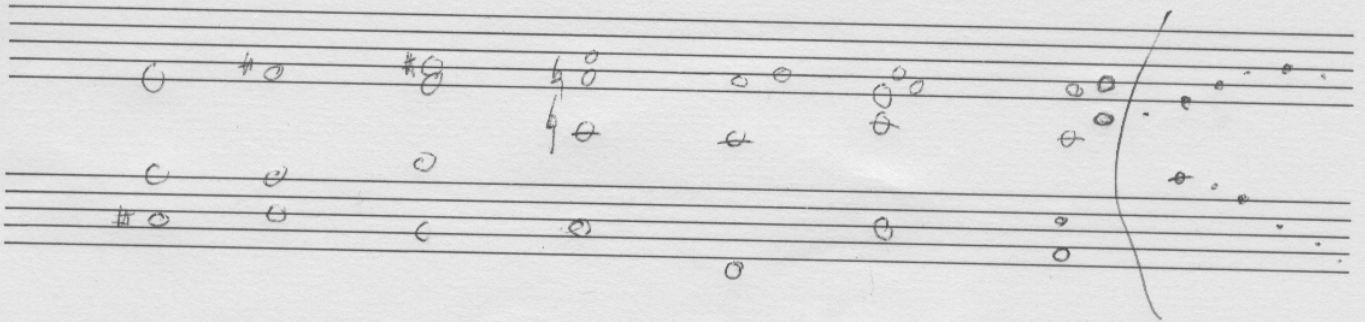
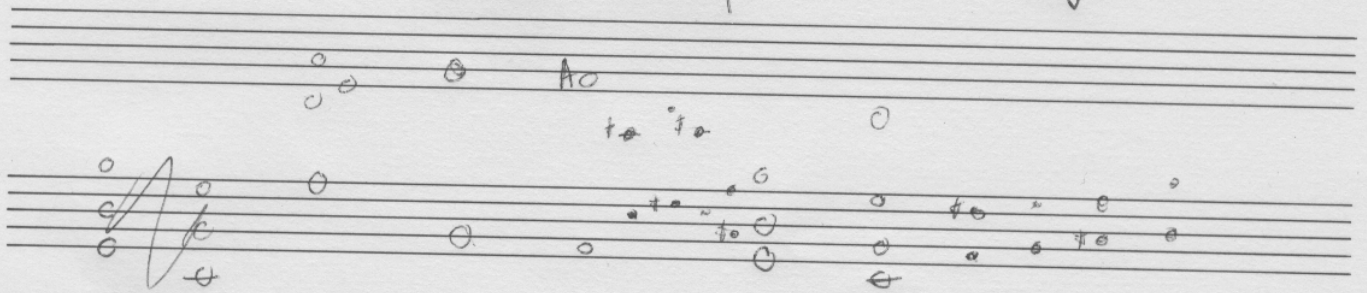
# GOthic BASS & GUITAR





# HOW TING

W





JB

A\_BASS & GUITAR

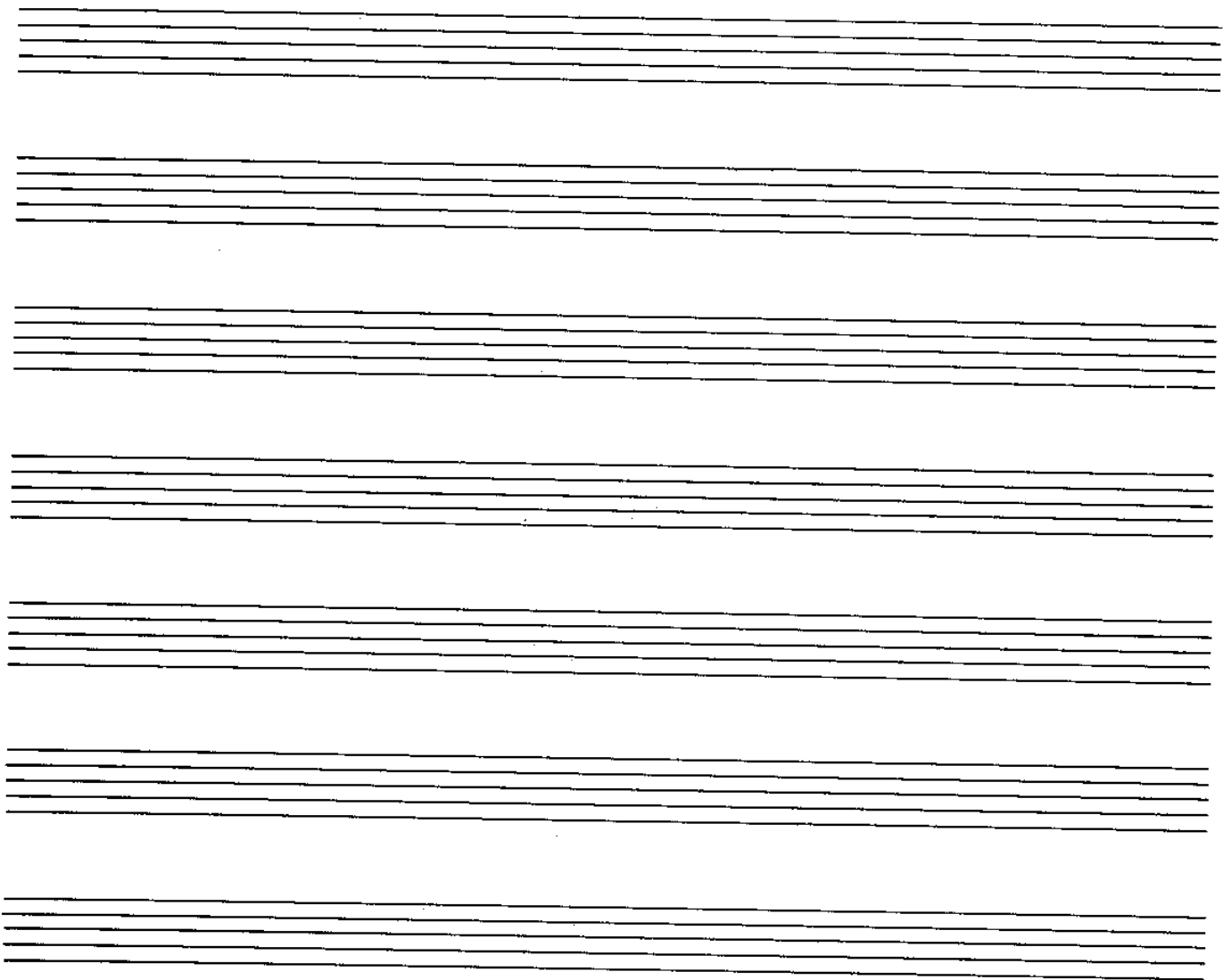
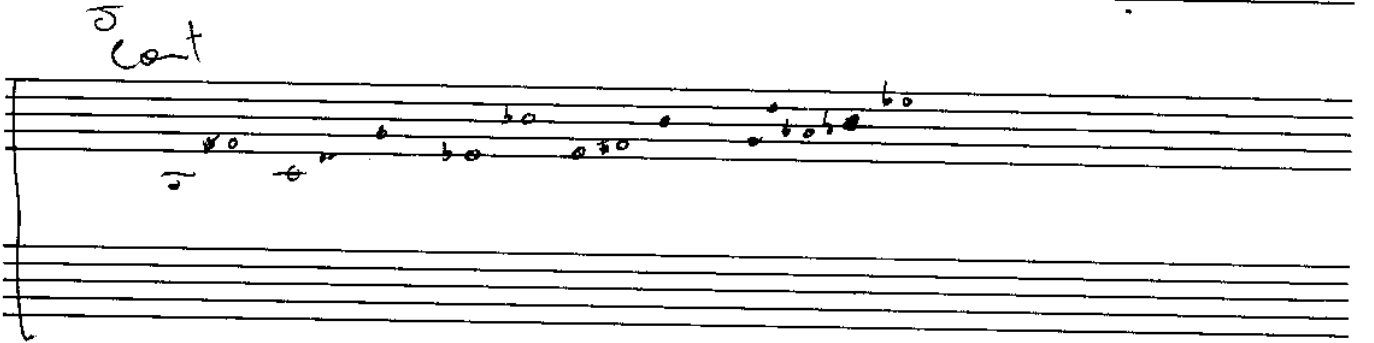
C

DSUS A/C# CSUS G/B E<sup>b</sup>/B<sup>b</sup> F- A<sup>b</sup>Δ7

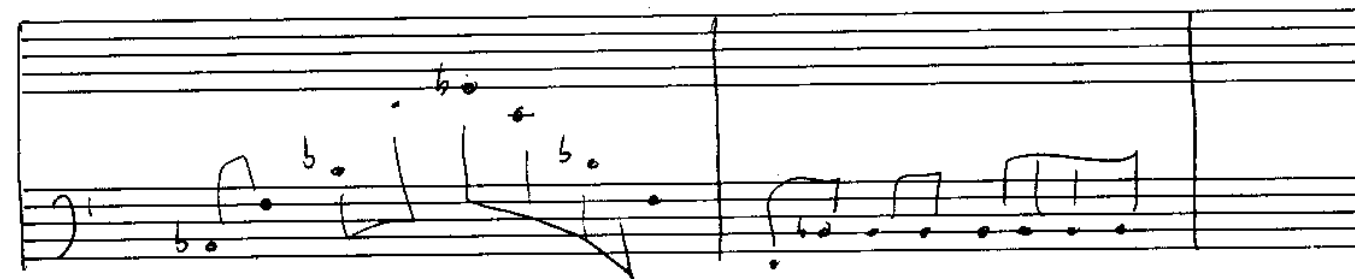
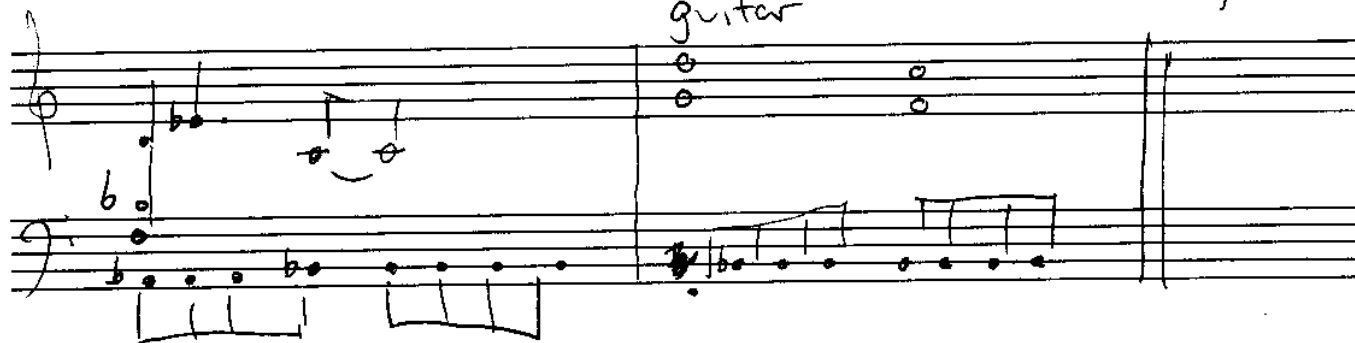
ESUS B/D# DSUS A/C# D chord

Interlude

# messia lick



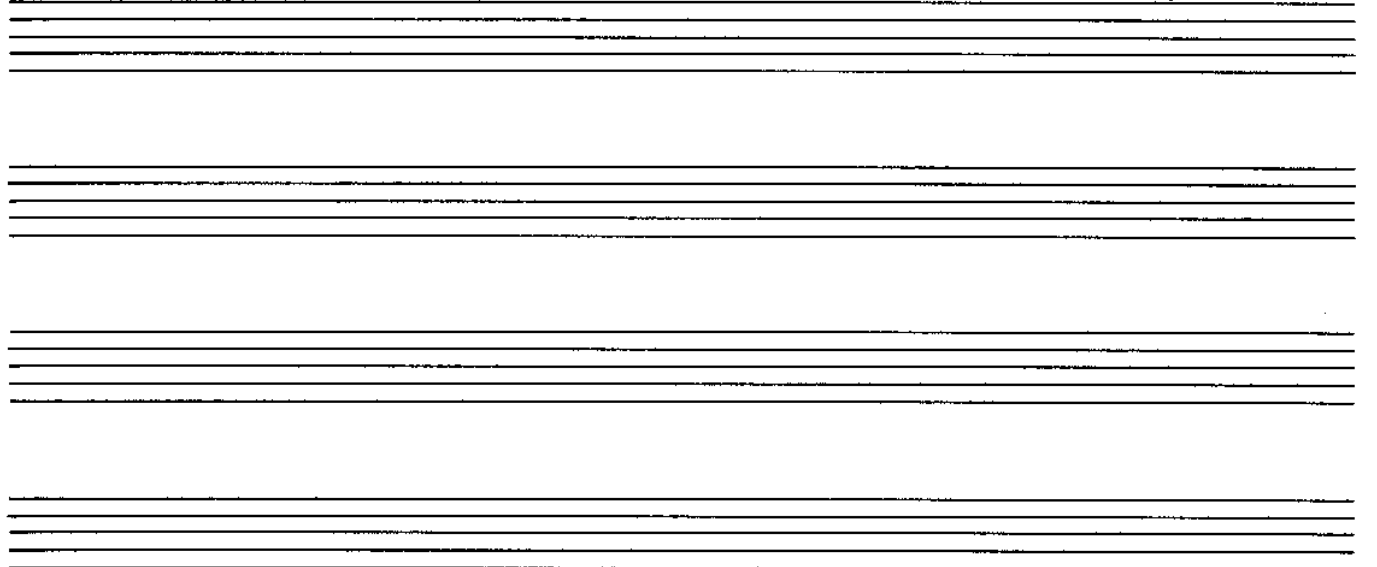
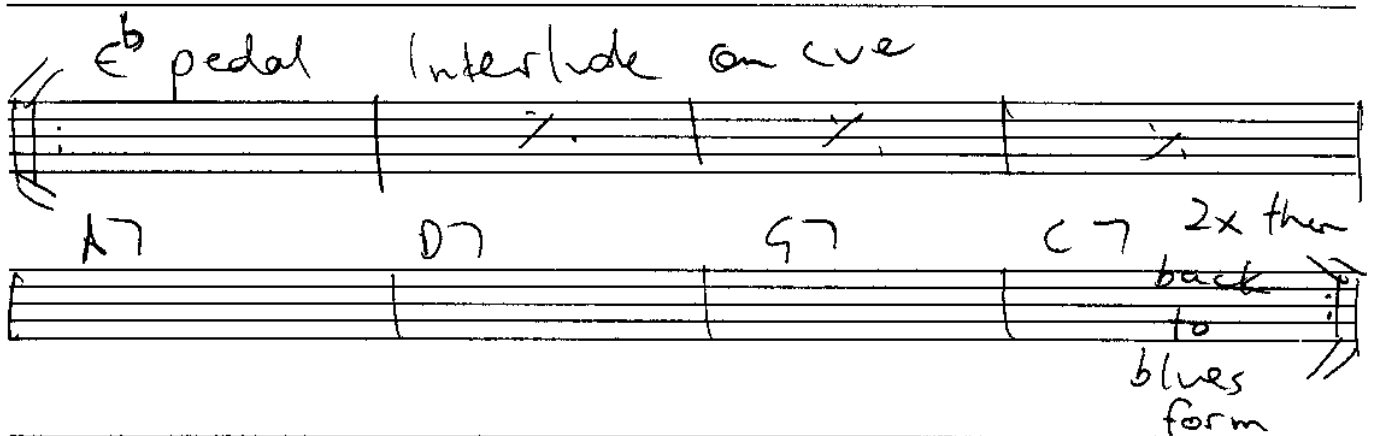
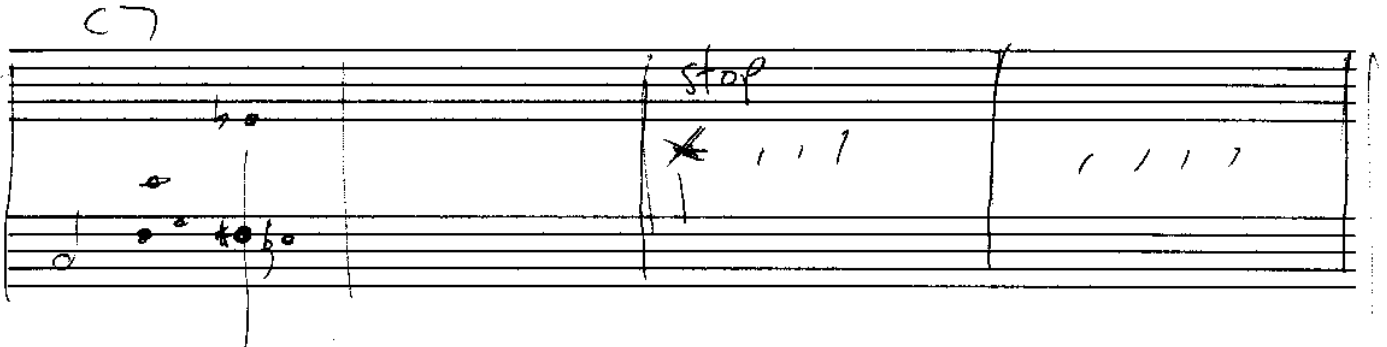
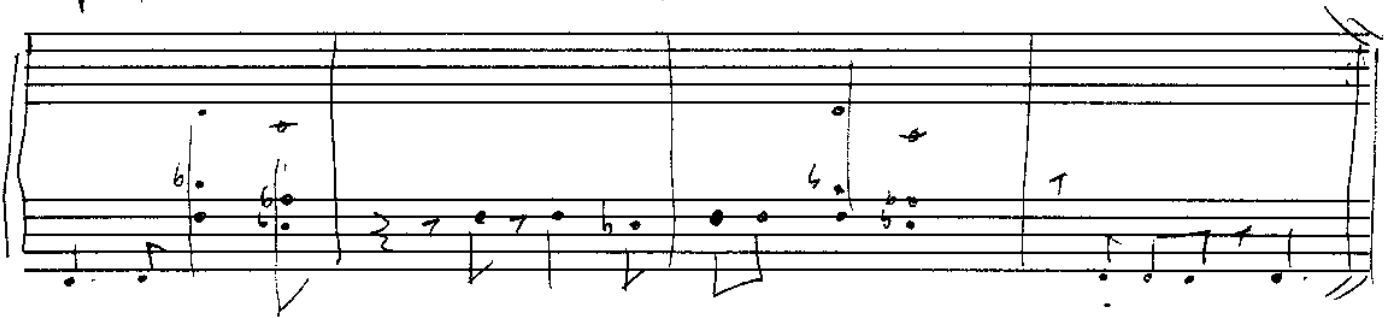
New vibez



# FOUR BUGS THE 10

F7

ORGANISED FUN



Handwritten musical notation on six staves. The notation consists of letters (F, C, B<sup>b</sup>, D, G) and dashes (-) placed above the staves, indicating a sequence of notes or chords. The first staff has four measures: F, F C, B<sup>b</sup>, and an empty measure. The second staff has four measures: F, C, B<sup>b</sup>, and F. The third staff has four measures: D-, C, B<sup>b</sup>, and F. The fourth staff has four measures: G-, B<sup>b</sup>, D-, and C. The fifth staff has four measures: B<sup>b</sup>, F, B<sup>b</sup>, and F. The sixth staff has four measures: G-, B<sup>b</sup>, D-, and C. Below the sixth staff is a small handwritten mark that looks like a stylized 'B' or 'P'.

Peaceful easy feeling

# RHYTHM BITCH SOLOS

B<sup>b</sup>7

E7

E<sup>b</sup>7

C7

F7

B<sup>b</sup>7

E7

E<sup>b</sup>7

B<sup>b</sup>7

B<sup>b</sup>7

E<sup>b</sup>7

stop

B<sup>b</sup>7

E7

E<sup>b</sup>7

B<sup>b</sup>7

# RHYTHM BITCH

Handwritten musical notation for the first four staves. The notation includes treble and bass clefs, a key signature of one flat (B-flat), and a 7/8 time signature. The first staff has a circled 'W' above it. The notes are: Staff 1: G4, A4, Bb4, C5, D5, E5, F5, G5; Staff 2: G4, A4, Bb4, C5, D5, E5, F5, G5; Staff 3: G4, A4, Bb4, C5, D5, E5, F5, G5; Staff 4: G4, A4, Bb4, C5, D5, E5, F5, G5.

Handwritten musical notation for the fifth staff. It features a treble clef, a key signature of one flat (B-flat), and a 7/8 time signature. The notes are: G4, A4, Bb4, C5, D5, E5, F5, G5. The word "Piano" is written above the first measure, and "Drums" is written to the right of the staff.

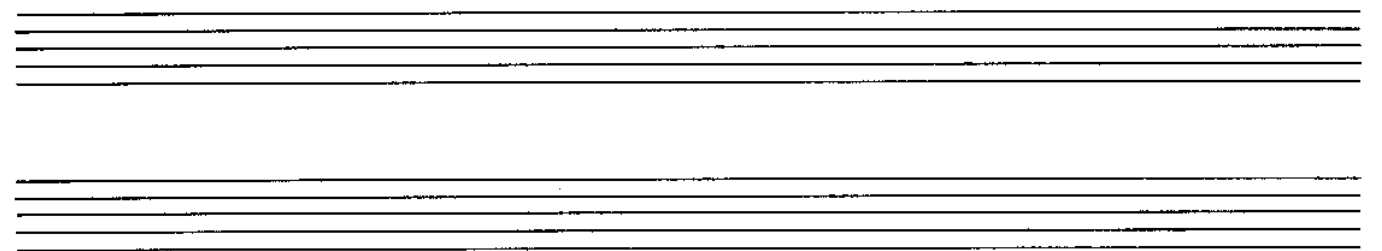
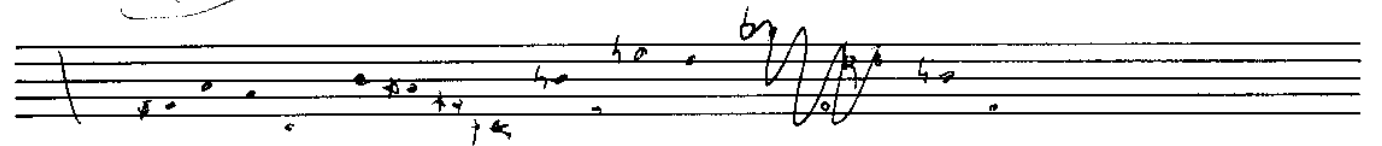
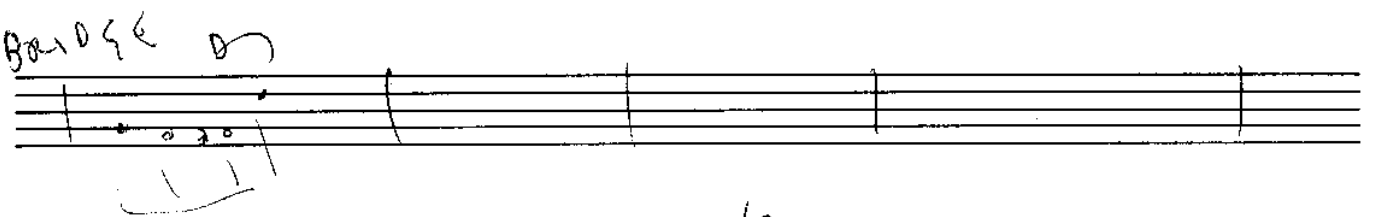
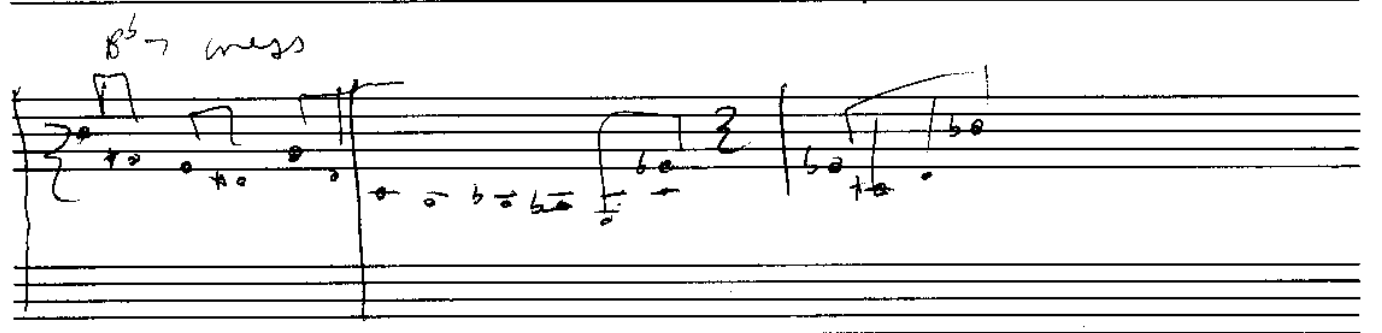
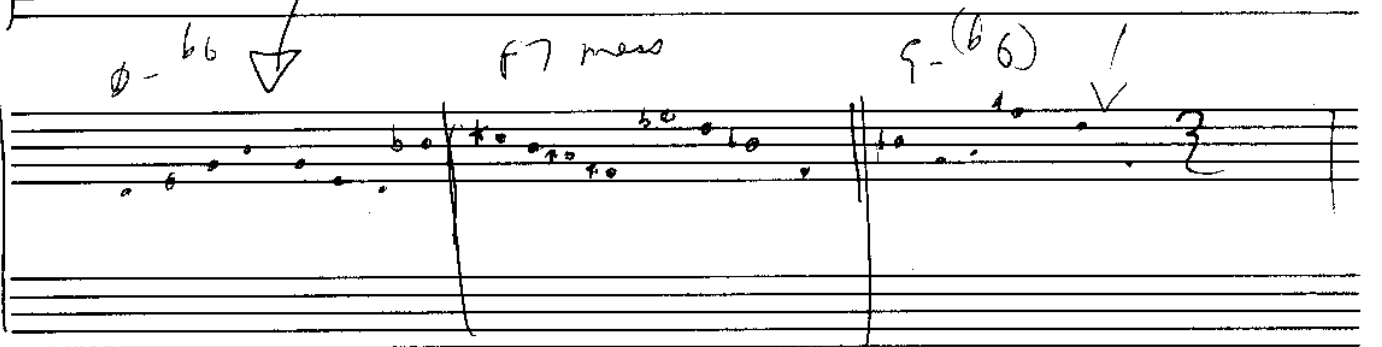
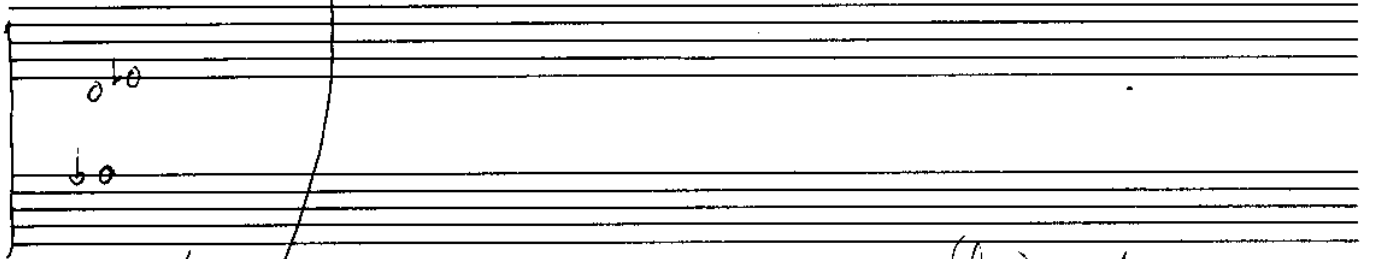
Handwritten musical notation for the sixth staff. It features a treble clef, a key signature of one flat (B-flat), and a 7/8 time signature. The notes are: G4, A4, Bb4, C5, D5, E5, F5, G5. The word "Drums" is written above the first measure, followed by an arrow pointing to the right.

Handwritten musical notation for the seventh and eighth staves. The seventh staff has a treble clef, a key signature of one flat (B-flat), and a 7/8 time signature. The notes are: G4, A4, Bb4, C5, D5, E5, F5, G5. The eighth staff has a treble clef, a key signature of one flat (B-flat), and a 7/8 time signature. The notes are: G4, A4, Bb4, C5, D5, E5, F5, G5. The word "(finish)" is written above the first measure of the eighth staff.

SOLO OVER HITS

or rhythm changes

# RHYTHM CHANGE

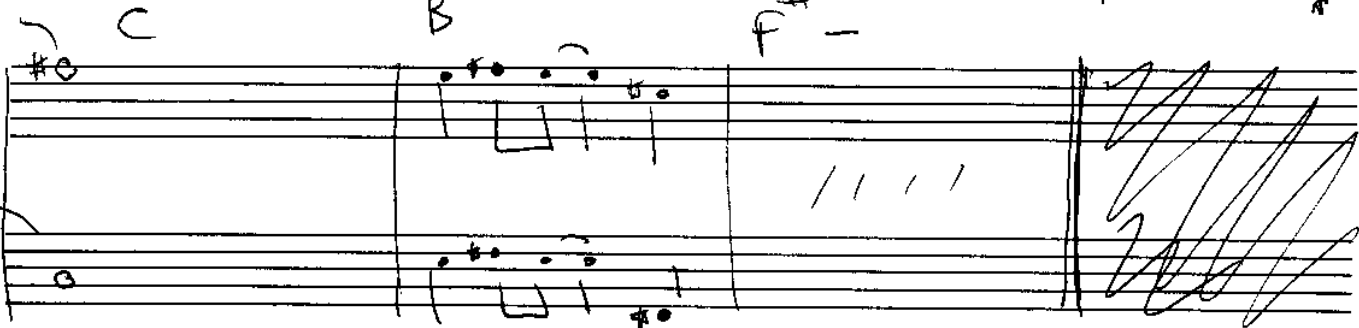
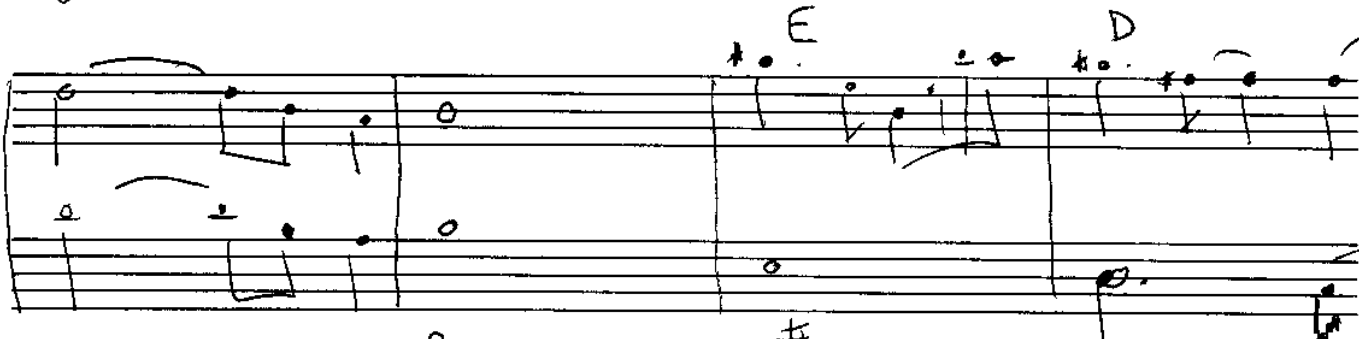
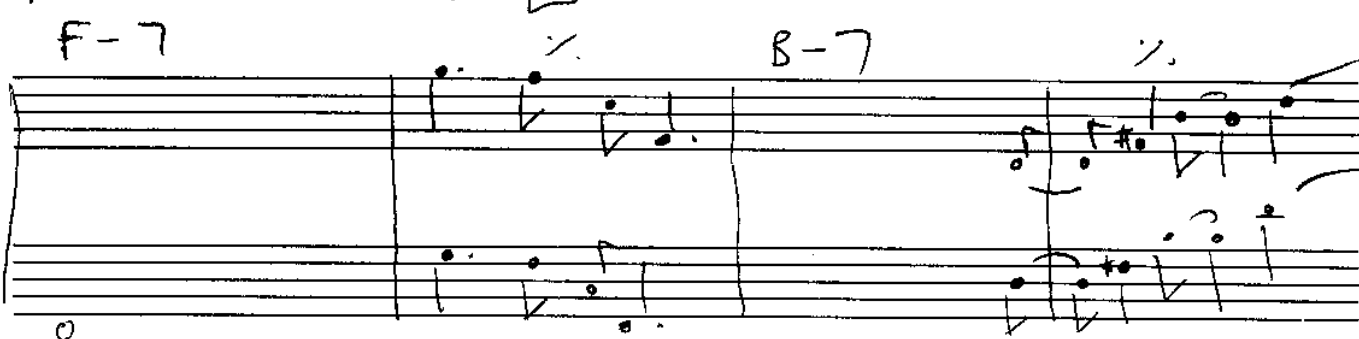
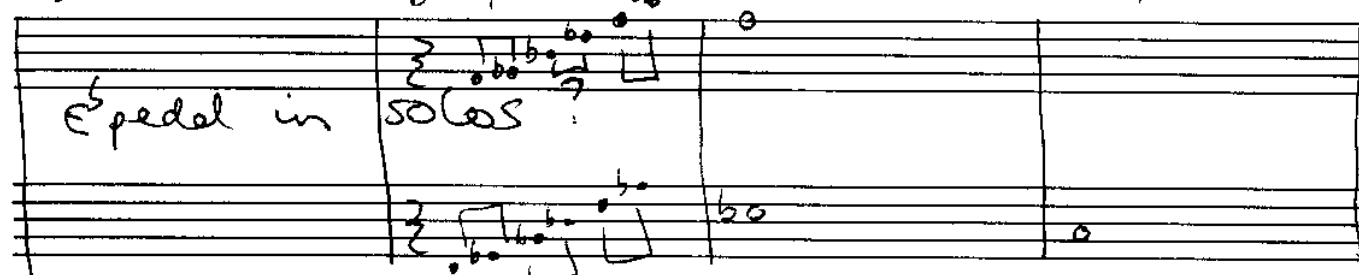




A<sup>b</sup>-7

Steamer

①



A<sup>b</sup>-

# Steamer

(2)

6

F-7

(walk)

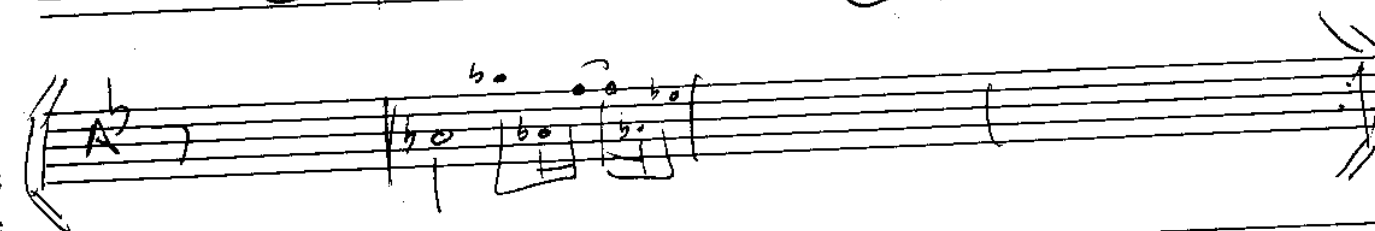
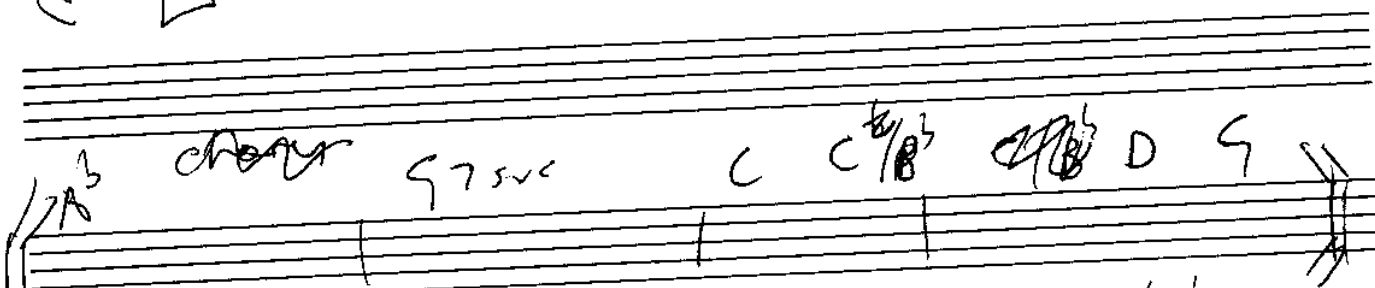
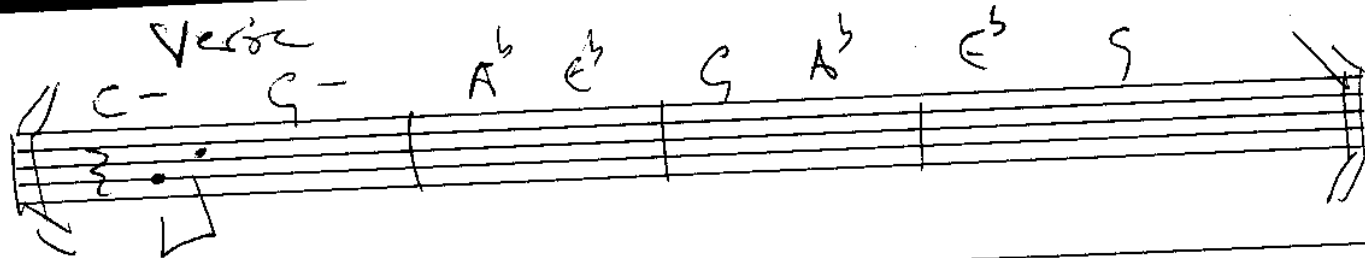
1 1 1 1

B-

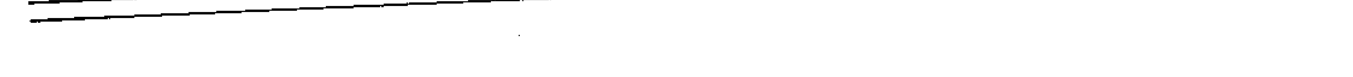
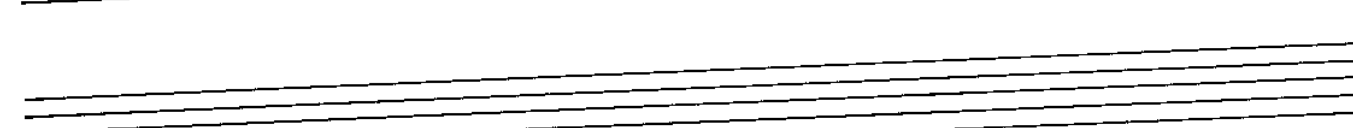
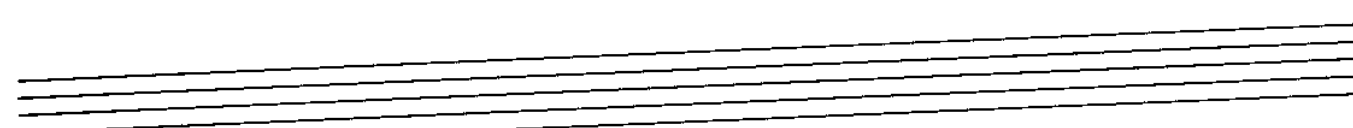
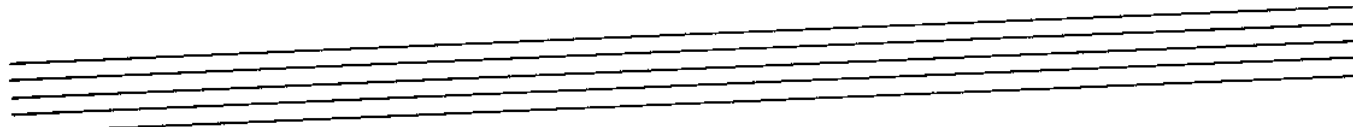
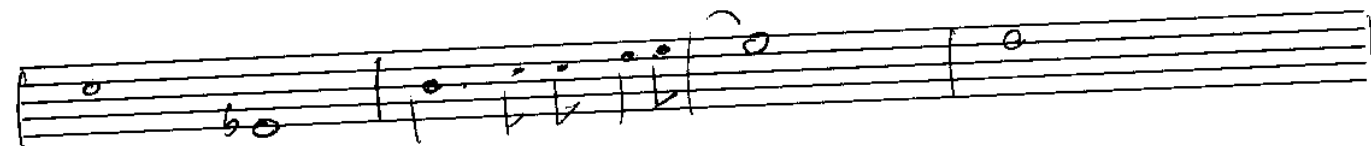
B-7

SOLO ON PAGE 1

Verse

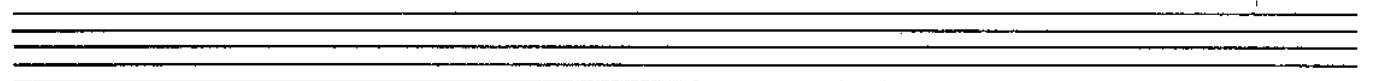
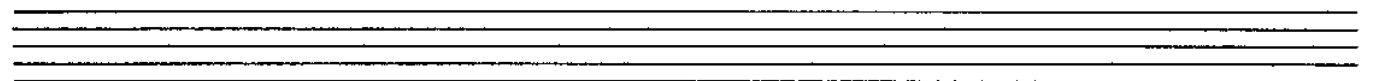
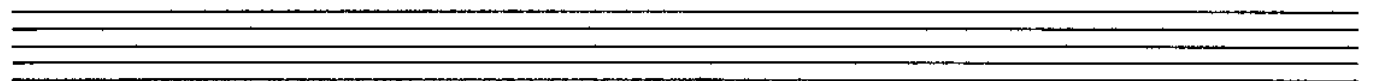
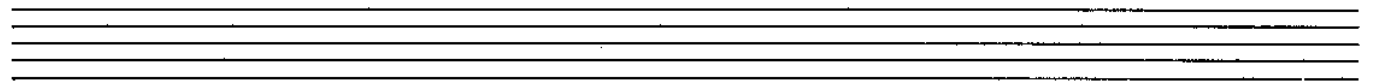
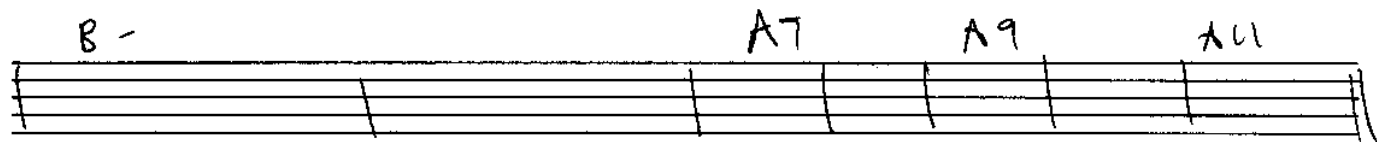
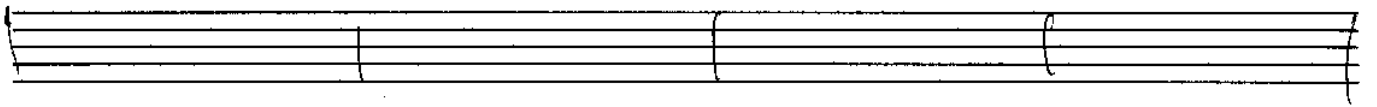
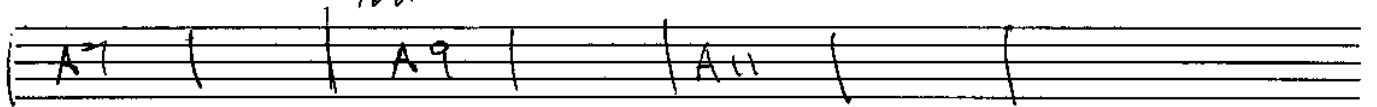


(straight grass)



# STRINE 2

RA



# STRINE



E

B-

E

B-

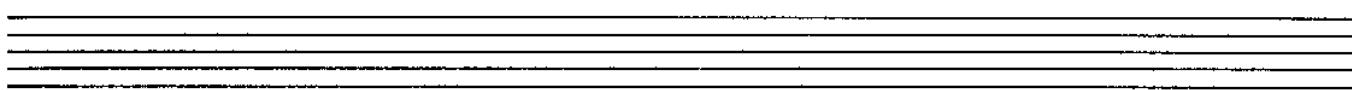


E

A

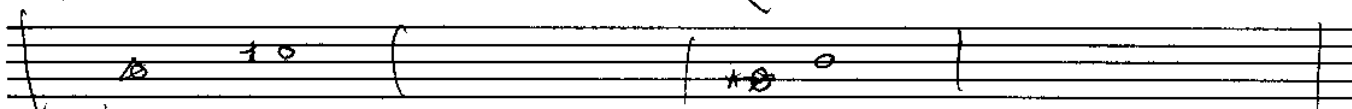
G

B



A

F



C-

Bsvl

B

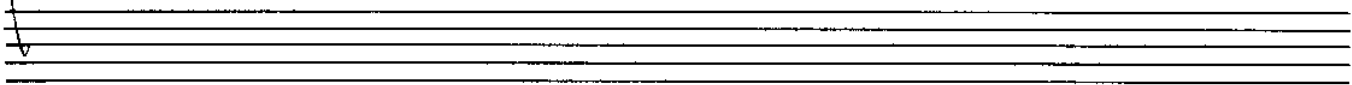
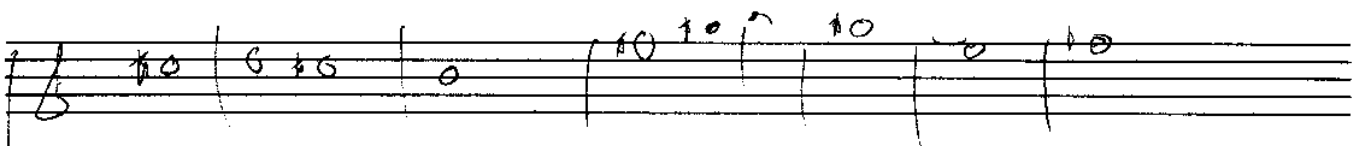


A

C-



A-



W00000

933 4451

Handwritten musical notation on a five-line staff. The notation includes various notes (half notes, quarter notes) and rests, with some notes marked with accidentals (sharps, flats). The staff is divided into measures by vertical bar lines. The notation is written in a cursive, handwritten style.

Handwritten musical notation on a five-line staff, continuing the piece. It features similar notation to the first system, with notes and rests. There are some additional markings below the staff, possibly indicating fingerings or other performance instructions.

Handwritten musical notation on a five-line staff, marked with a circled 'B' in the left margin. This system continues the musical composition with various note values and accidentals.

Handwritten musical notation on a five-line staff, marked with a circled 'C' in the left margin. This system includes a double bar line, suggesting the end of a section or phrase.

Handwritten musical notation on a five-line staff, featuring a large bracketed section on the right side. This section appears to be a variation or a specific musical phrase. The notation includes notes, rests, and accidentals.

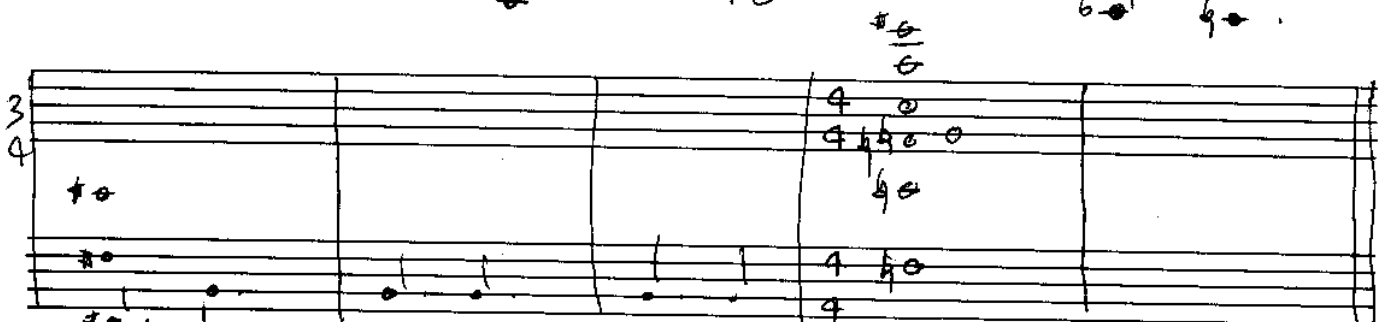
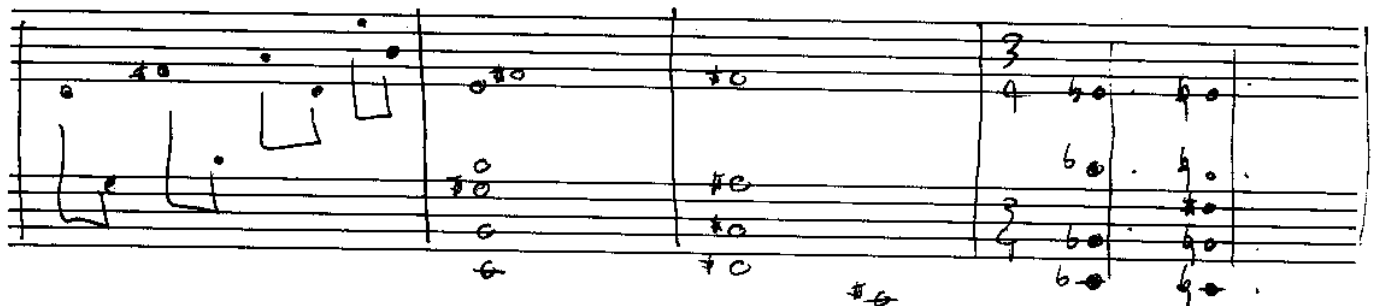
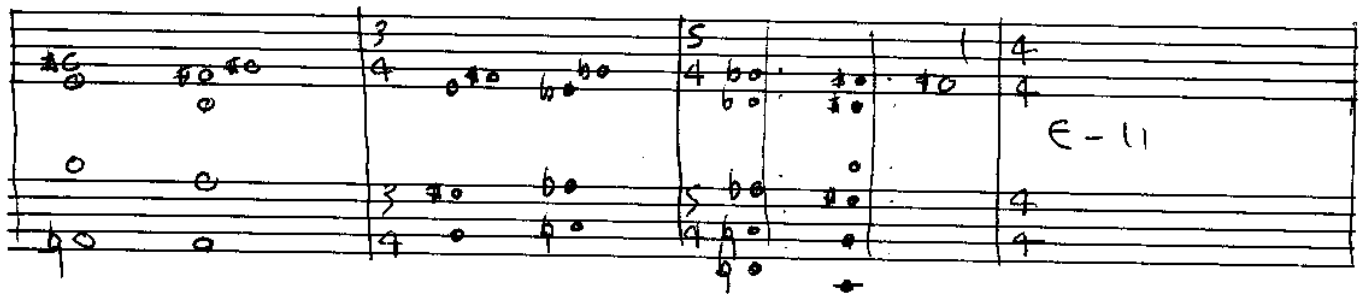
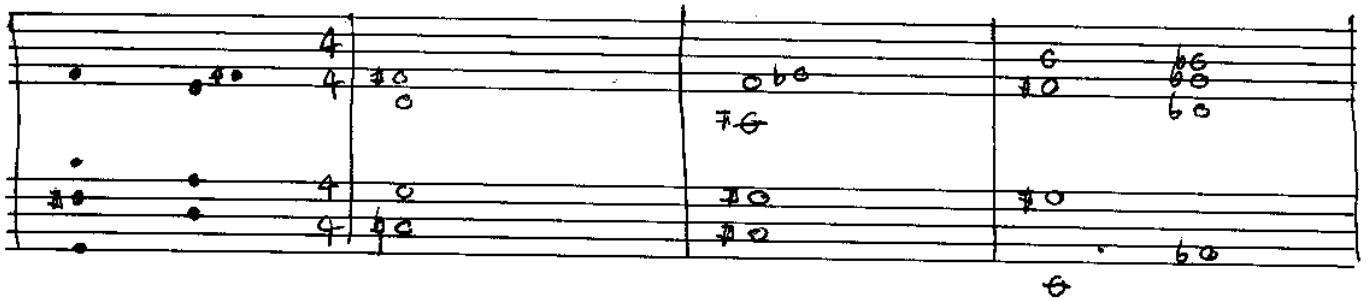
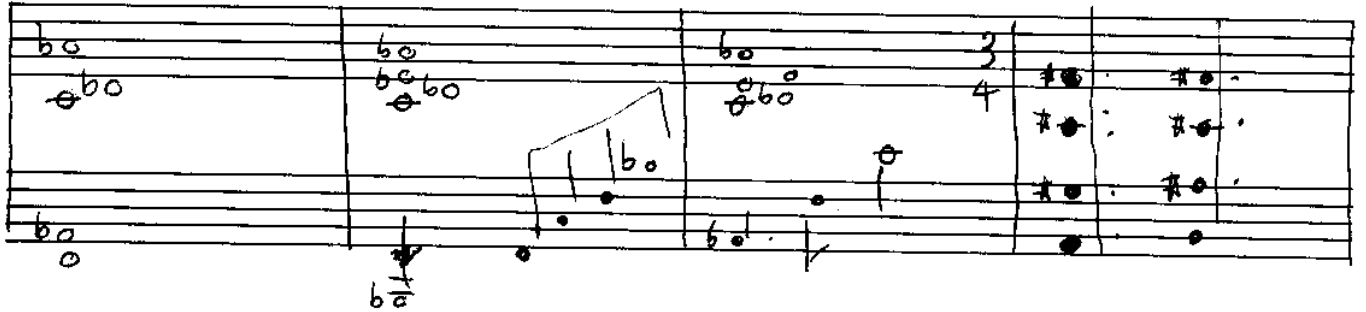
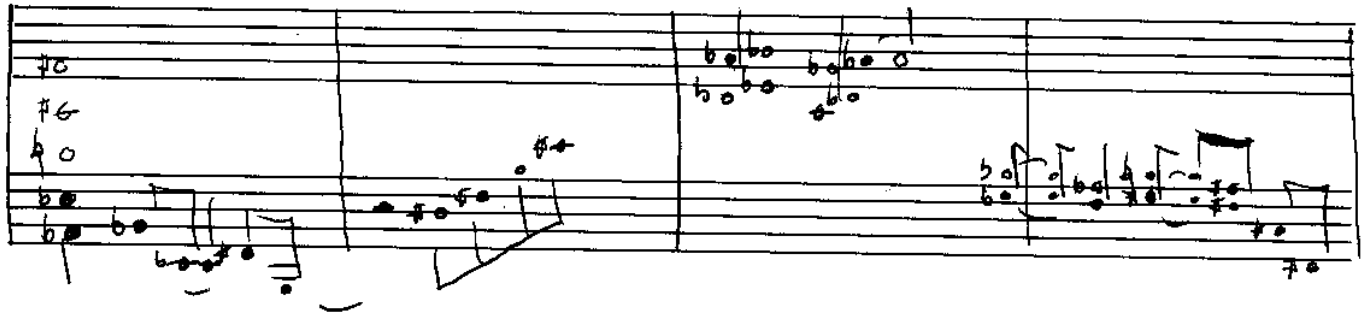
Two empty five-line musical staves at the bottom of the page, providing space for further notation.

Handwritten musical notation on a five-line staff. The notation includes various notes, rests, and accidentals (sharps, flats, naturals). There are some scribbles and corrections in the middle of the staff.

Handwritten musical notation on a five-line staff. The notation includes various notes, rests, and accidentals. A large, stylized scribble is present on the left side of the staff. The time signature  $3/4$  is written above the staff. There are also some arrows pointing down to specific notes.

Handwritten musical notation on a five-line staff. The notation includes various notes, rests, and accidentals. There are some scribbles and corrections in the middle of the staff.

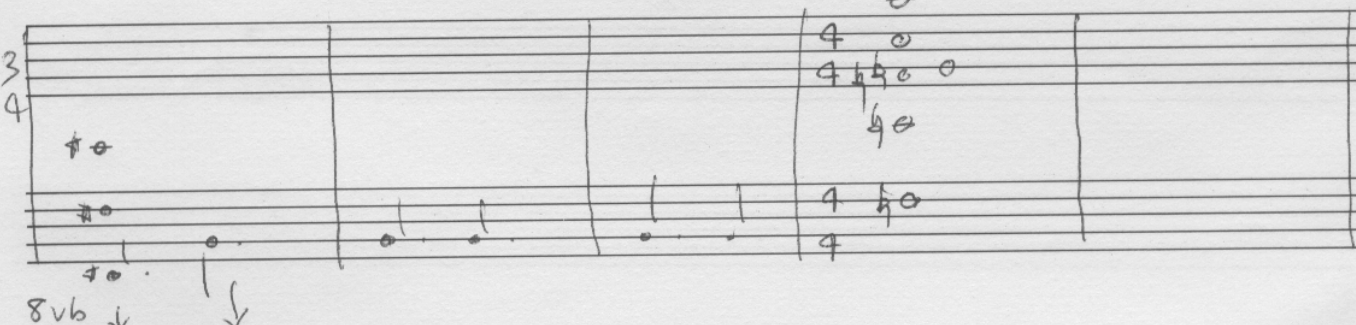
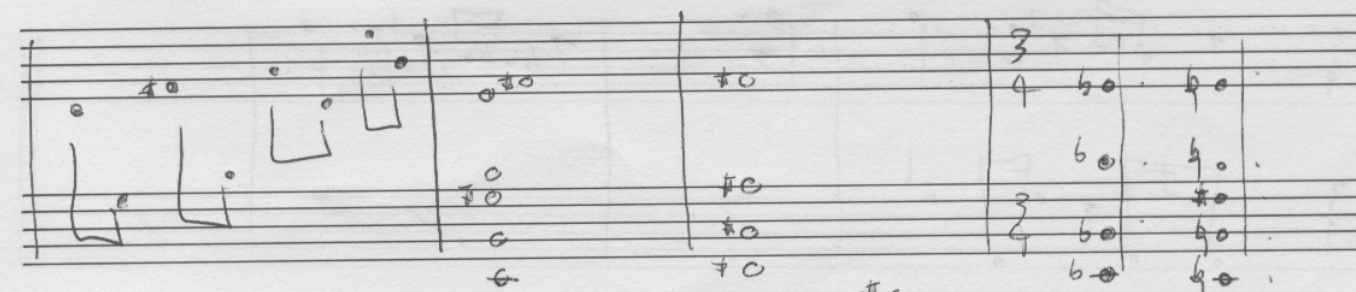
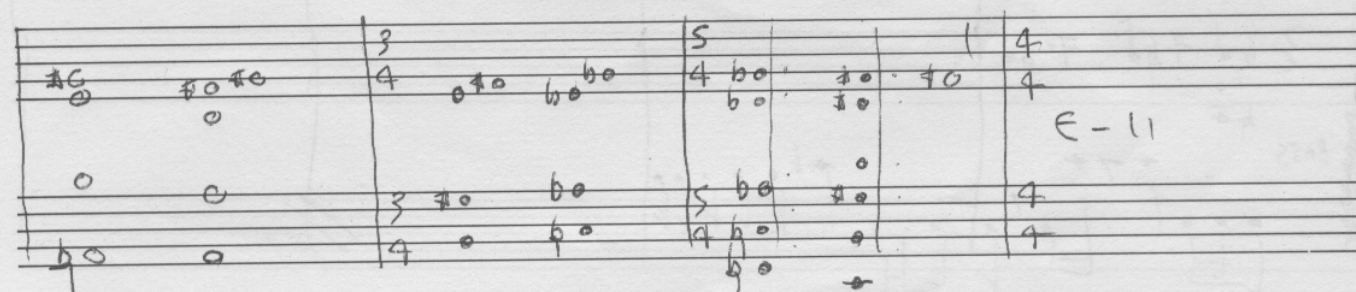
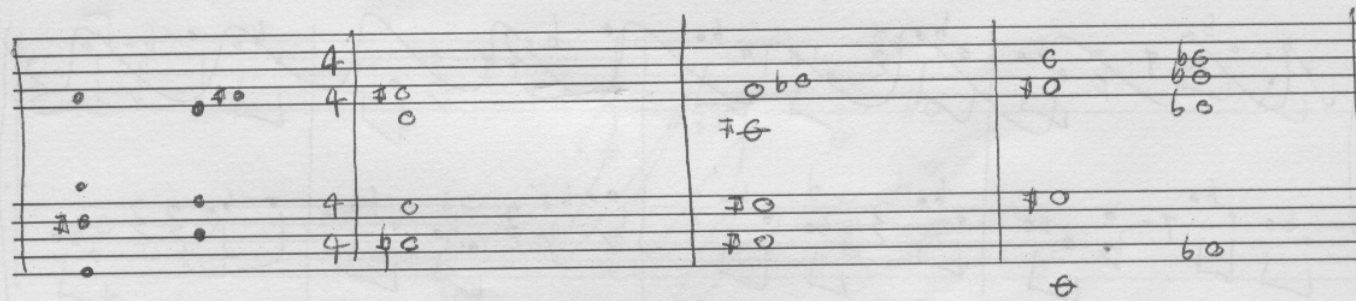
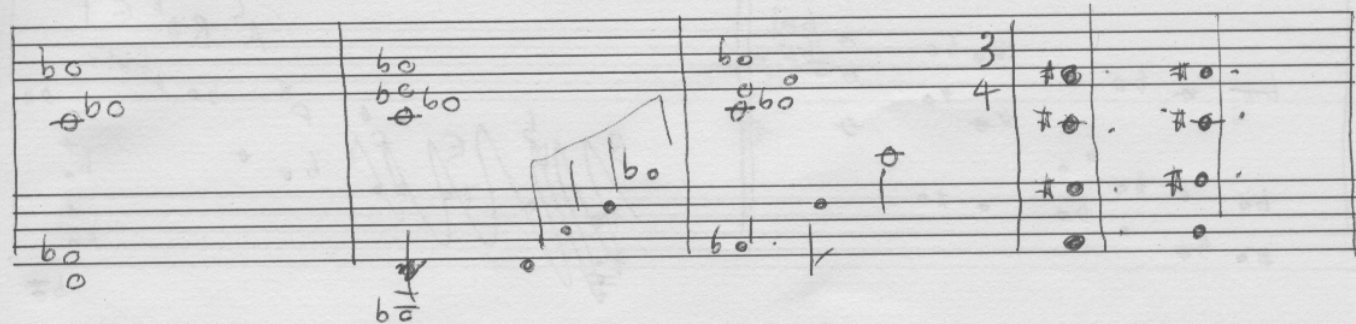
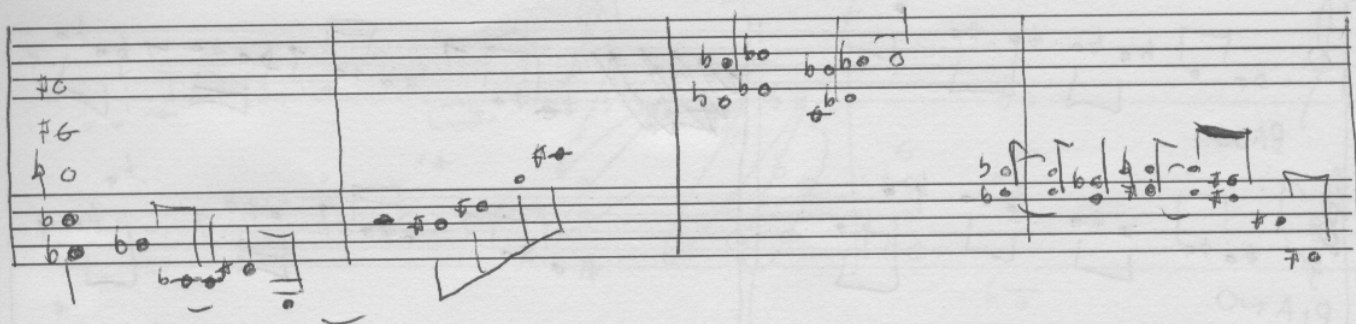
# YOU CALLED



8vb ↓



# YOU CALLED



233

X You called?

